

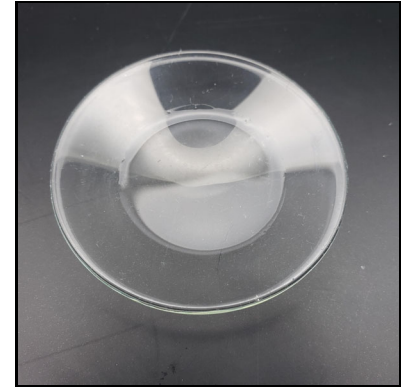
## Certificate of Analysis

|   |  |
|---|--|
| <b>Client Name:</b> Dreamin Farms LLC                           | <b>Matrix:</b> Solid                       |
| <b>Client Address:</b> 12301 260th Ave., New Richland, MN 56072 | <b>Date Received:</b> 4/5/2024 10:08:00AM  |
| <b>Sample ID:</b> 1000mg FS (full spectrum)                     | <b>Lab Sample ID:</b> 2401390-01           |
| <b>Lot/Batch #:</b>   | <b>Date of Report:</b> 4/12/2024 4:19:18PM |

| Analysis            | Requested (Yes/No) |
|---------------------|--------------------|
| Cannabinoid Profile | Yes                |
| Terpene Profile     | No                 |
| Aflatoxins          | No                 |
| Heavy Metals        | No                 |
| Residual Solvents   | No                 |
| Microbial Testing   | No                 |
| Pesticides          | No                 |



Sample, packaged



Sample, actual

### Cannabinoid Profile 2401390-01

### 1000mg FS (full spectrum)

| Analyte                               | Result   | RL      | Units         | Analysis Method | Date Analyzed  | Notes |
|---------------------------------------|----------|---------|---------------|-----------------|----------------|-------|
| Cannabichromene (CBC)                 | 0.0725   | 0.00200 | % by Weight w | HPLC            | 4/8/24 5:38 pm |       |
| Cannabidiol (CBD)                     | 2.81     | 0.200   | % by Weight w | HPLC            | 4/8/24 6:09 pm |       |
| Cannabidiolic Acid (CBDA)             | 0.00211  | 0.00200 | % by Weight w | HPLC            | 4/8/24 5:38 pm |       |
| Cannabigerol (CBG)                    | 0.0562   | 0.00200 | % by Weight w | HPLC            | 4/8/24 5:38 pm |       |
| Cannabigerolic Acid (CBGA)            | 0.0336   | 0.00200 | % by Weight w | HPLC            | 4/8/24 5:38 pm |       |
| Cannabinol (CBN)                      | 0.00736  | 0.00200 | % by Weight w | HPLC            | 4/8/24 5:38 pm |       |
| Delta-8-Tetrahydrocannabinol (d8-THC) | 0.0104   | 0.0100  | % by Weight w | HPLC            | 4/8/24 5:38 pm |       |
| Delta-9-Tetrahydrocannabinol (d9-THC) | 0.118    | 0.00200 | % by Weight w | HPLC            | 4/8/24 5:38 pm |       |
| THCA-A                                | <0.00200 | 0.00200 | % by Weight w | HPLC            | 4/8/24 5:38 pm |       |
| Total CBG                             | 0.0858   | 0.00376 | % by Weight w | HPLC            | 4/8/24 5:38 pm |       |
| Total CBD                             | 2.82     | 0.202   | % by Weight w | HPLC            | 4/8/24 6:09 pm |       |
| Total THC                             | 0.118    | 0.00375 | % by Weight w | HPLC            | 4/8/24 5:38 pm |       |

### Sample Narrative: 2401390-01

### 1000mg FS (full spectrum)

2401390-01, '1000mg FS (Full Spectrum). 26mg of CBD per milliliter.



Taylor Schertler - Administrative Manager Investigative Chem

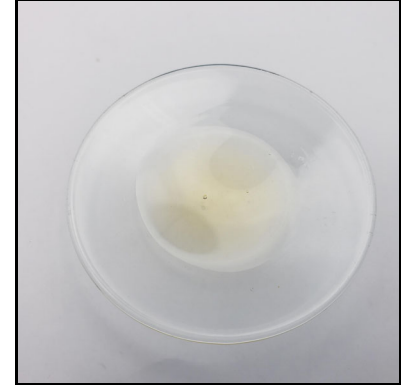
## Certificate of Analysis

|   |  |
|---|--|
| <b>Client Name:</b> Dreamin Farms LLC                           | <b>Matrix:</b> Solid                       |
| <b>Client Address:</b> 12301 260th Ave., New Richland, MN 56072 | <b>Date Received:</b> 4/5/2024 10:08:00AM  |
| <b>Sample ID:</b> 4000mg FS (full spectrum)                     | <b>Lab Sample ID:</b> 2401390-02           |
| <b>Lot/Batch #:</b>   | <b>Date of Report:</b> 4/12/2024 4:19:18PM |

| Analysis            | Requested (Yes/No) |
|---------------------|--------------------|
| Cannabinoid Profile | Yes                |
| Terpene Profile     | No                 |
| Aflatoxins          | No                 |
| Heavy Metals        | No                 |
| Residual Solvents   | No                 |
| Microbial Testing   | No                 |
| Pesticides          | No                 |



Sample, packaged



Sample, actual

### Cannabinoid Profile 2401390-02

### 4000mg FS (full spectrum)

| Analyte                               | Result   | RL      | Units         | Analysis Method | Date Analyzed  | Notes |
|---------------------------------------|----------|---------|---------------|-----------------|----------------|-------|
| Cannabichromene (CBC)                 | 0.00490  | 0.00200 | % by Weight w | HPLC            | 4/8/24 6:16 pm |       |
| Cannabidiol (CBD)                     | 13.1     | 0.200   | % by Weight w | HPLC            | 4/8/24 6:31 pm |       |
| Cannabidiolic Acid (CBDA)             | 0.00832  | 0.00200 | % by Weight w | HPLC            | 4/8/24 6:16 pm |       |
| Cannabigerol (CBG)                    | 0.00539  | 0.00200 | % by Weight w | HPLC            | 4/8/24 6:16 pm |       |
| Cannabigerolic Acid (CBGA)            | <0.00200 | 0.00200 | % by Weight w | HPLC            | 4/8/24 6:16 pm |       |
| Cannabinol (CBN)                      | <0.00200 | 0.00200 | % by Weight w | HPLC            | 4/8/24 6:16 pm |       |
| Delta-8-Tetrahydrocannabinol (d8-THC) | <0.0100  | 0.0100  | % by Weight w | HPLC            | 4/8/24 6:16 pm |       |
| Delta-9-Tetrahydrocannabinol (d9-THC) | 0.00635  | 0.00200 | % by Weight w | HPLC            | 4/8/24 6:16 pm |       |
| THCA-A                                | <0.00200 | 0.00200 | % by Weight w | HPLC            | 4/8/24 6:16 pm |       |
| Total CBG                             | 0.00539  | 0.00376 | % by Weight w | HPLC            | 4/8/24 6:16 pm |       |
| Total CBD                             | 13.1     | 0.202   | % by Weight w | HPLC            | 4/8/24 6:31 pm |       |
| Total THC                             | 0.00635  | 0.00375 | % by Weight w | HPLC            | 4/8/24 6:16 pm |       |

### Sample Narrative: 2401390-02

### 4000mg FS (full spectrum)

2401390-02, '4000mg FS (Full Spectrum). 123mg of CBD per milliliter.

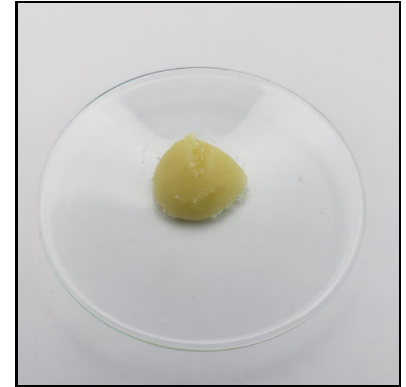
## Certificate of Analysis

|   |  |
|---|--|
| <b>Client Name:</b> Dreamin Farms LLC                           | <b>Matrix:</b> Solid                       |
| <b>Client Address:</b> 12301 260th Ave., New Richland, MN 56072 | <b>Date Received:</b> 4/5/2024 10:08:00AM  |
| <b>Sample ID:</b> Muscle Balm (2400mg)                          | <b>Lab Sample ID:</b> 2401390-03           |
| <b>Lot/Batch #:</b>   | <b>Date of Report:</b> 4/12/2024 4:19:18PM |

| Analysis            | Requested (Yes/No) |
|---------------------|--------------------|
| Cannabinoid Profile | Yes                |
| Terpene Profile     | No                 |
| Aflatoxins          | No                 |
| Heavy Metals        | No                 |
| Residual Solvents   | No                 |
| Microbial Testing   | No                 |
| Pesticides          | No                 |



Sample, packaged



Sample, actual

### Cannabinoid Profile 2401390-03

### Muscle Balm (2400mg)

| Analyte                               | Result   | RL      | Units         | Analysis Method | Date Analyzed  | Notes |
|---------------------------------------|----------|---------|---------------|-----------------|----------------|-------|
| Cannabichromene (CBC)                 | 0.119    | 0.00188 | % by Weight w | HPLC            | 4/8/24 6:39 pm |       |
| Cannabidiol (CBD)                     | 4.78     | 0.188   | % by Weight w | HPLC            | 4/8/24 6:54 pm |       |
| Cannabidiolic Acid (CBDA)             | <0.00188 | 0.00188 | % by Weight w | HPLC            | 4/8/24 6:39 pm |       |
| Cannabigerol (CBG)                    | 0.0585   | 0.00188 | % by Weight w | HPLC            | 4/8/24 6:39 pm |       |
| Cannabigerolic Acid (CBGA)            | <0.00188 | 0.00188 | % by Weight w | HPLC            | 4/8/24 6:39 pm |       |
| Cannabinol (CBN)                      | 0.00394  | 0.00188 | % by Weight w | HPLC            | 4/8/24 6:39 pm |       |
| Delta-8-Tetrahydrocannabinol (d8-THC) | <0.00938 | 0.00938 | % by Weight w | HPLC            | 4/8/24 6:39 pm |       |
| Delta-9-Tetrahydrocannabinol (d9-THC) | 0.141    | 0.00188 | % by Weight w | HPLC            | 4/8/24 6:39 pm |       |
| THCA-A                                | <0.00188 | 0.00188 | % by Weight w | HPLC            | 4/8/24 6:39 pm |       |
| Total CBG                             | 0.0585   | 0.00352 | % by Weight w | HPLC            | 4/8/24 6:39 pm |       |
| Total CBD                             | 4.78     | 0.189   | % by Weight w | HPLC            | 4/8/24 6:54 pm |       |
| Total THC                             | 0.141    | 0.00352 | % by Weight w | HPLC            | 4/8/24 6:39 pm |       |

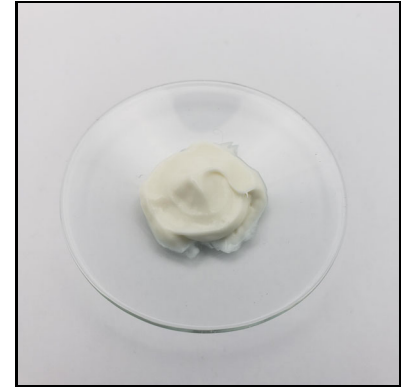
## Certificate of Analysis

|   |  |
|---|--|
| <b>Client Name:</b> Dreamin Farms LLC                           | <b>Matrix:</b> Solid                       |
| <b>Client Address:</b> 12301 260th Ave., New Richland, MN 56072 | <b>Date Received:</b> 4/5/2024 10:08:00AM  |
| <b>Sample ID:</b> Cream (1000mg)                                | <b>Lab Sample ID:</b> 2401390-04           |
| <b>Lot/Batch #:</b>   | <b>Date of Report:</b> 4/12/2024 4:19:18PM |

| Analysis            | Requested (Yes/No) |
|---------------------|--------------------|
| Cannabinoid Profile | Yes                |
| Terpene Profile     | No                 |
| Aflatoxins          | No                 |
| Heavy Metals        | No                 |
| Residual Solvents   | No                 |
| Microbial Testing   | No                 |
| Pesticides          | No                 |



Sample, packaged



Sample, actual

### Cannabinoid Profile 2401390-04

### Cream (1000mg)

| Analyte                               | Result   | RL      | Units         | Analysis Method | Date Analyzed  | Notes |
|---------------------------------------|----------|---------|---------------|-----------------|----------------|-------|
| Cannabichromene (CBC)                 | 0.0214   | 0.00187 | % by Weight w | HPLC            | 4/8/24 7:02 pm |       |
| Cannabidiol (CBD)                     | 0.828    | 0.0187  | % by Weight w | HPLC            | 4/8/24 7:09 pm |       |
| Cannabidiolic Acid (CBDA)             | <0.00187 | 0.00187 | % by Weight w | HPLC            | 4/8/24 7:02 pm |       |
| Cannabigerol (CBG)                    | 0.00990  | 0.00187 | % by Weight w | HPLC            | 4/8/24 7:02 pm |       |
| Cannabigerolic Acid (CBGA)            | 0.00337  | 0.00187 | % by Weight w | HPLC            | 4/8/24 7:02 pm |       |
| Cannabinol (CBN)                      | <0.00187 | 0.00187 | % by Weight w | HPLC            | 4/8/24 7:02 pm |       |
| Delta-8-Tetrahydrocannabinol (d8-THC) | <0.00934 | 0.00934 | % by Weight w | HPLC            | 4/8/24 7:02 pm |       |
| Delta-9-Tetrahydrocannabinol (d9-THC) | 0.0233   | 0.00187 | % by Weight w | HPLC            | 4/8/24 7:02 pm |       |
| THCA-A                                | <0.00187 | 0.00187 | % by Weight w | HPLC            | 4/8/24 7:02 pm |       |
| Total CBG                             | 0.0129   | 0.00351 | % by Weight w | HPLC            | 4/8/24 7:02 pm |       |
| Total CBD                             | 0.828    | 0.0203  | % by Weight w | HPLC            | 4/8/24 7:09 pm |       |
| Total THC                             | 0.0233   | 0.00350 | % by Weight w | HPLC            | 4/8/24 7:02 pm |       |

## Certificate of Analysis

### Notes and Definitions

|       |  |
|-------|--|
| CFU/g | Colony Forming Units per Gram          |
| HPLC  | High-Performance Liquid Chromatography |
| MS    | Mass Spectrometry                      |
| <     | Less than value listed                 |
| RL    | Reporting Limit                        |
| NA    | Not Applicable                         |